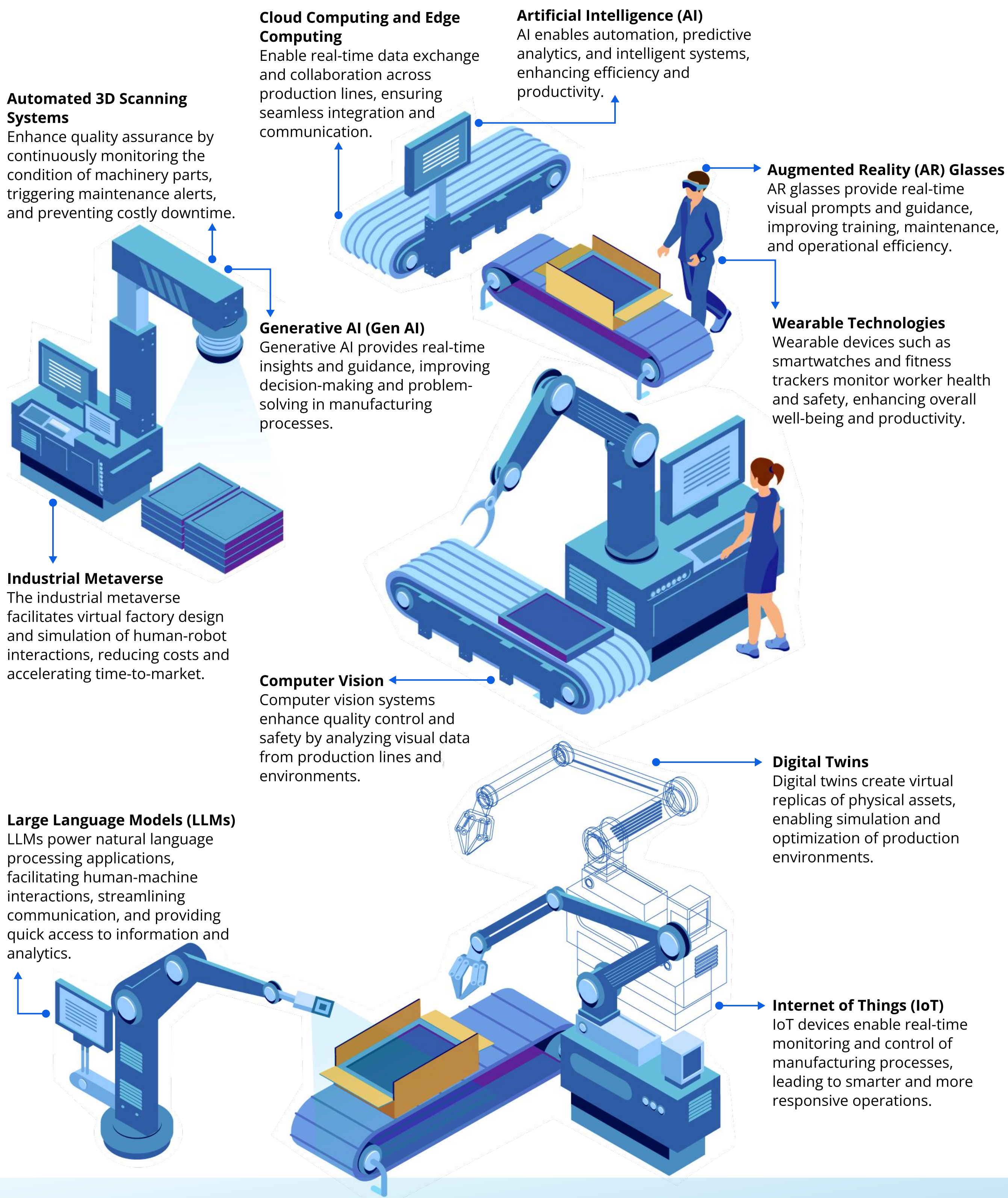


# TACKLING TOP CHALLENGES ON THE FACTORY FLOOR

These technologies collectively mixed and matched are solving skill and labor shortages, enhancing manufacturing agility, and improving maintenance and reliability, paving the way for the Industry 5.0 factory floor of the future.



# HERE'S WHAT TODAY'S INDUSTRY 4.0 TECH ACHIEVES AND HOW IT EVOLVES INTO INDUSTRY 5.0

## Edge Computing

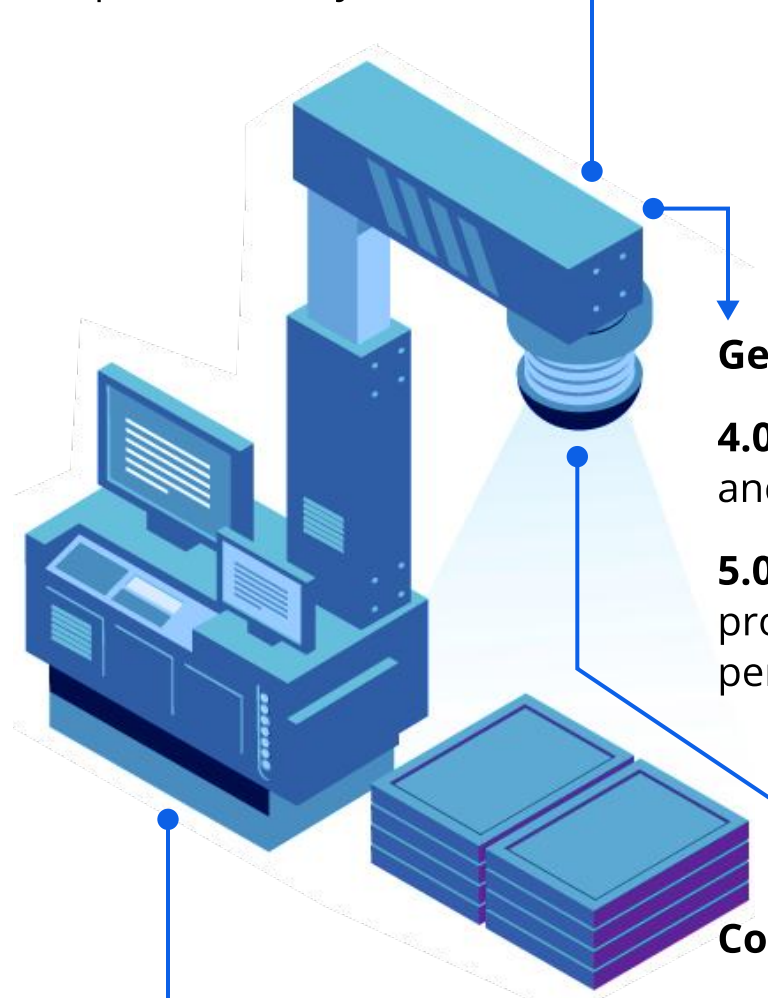
**4.0:** Processes data locally to reduce latency.

**5.0:** Supports adaptive systems that enhance human interactions.

## Automated 3D Scanning Systems

**4.0:** Enhance quality assurance by monitoring machinery parts.

**5.0:** Integrate with human oversight to prevent costly downtime.



## Generative AI (Gen AI)

**4.0:** Optimizes automation and enhances design.

**5.0:** Focuses on creative problem-solving and personalized assistance.

## Computer Vision

**4.0:** Uses cameras for quality control, safety monitoring, and inspections.

**5.0:** Monitors product quality and human safety simultaneously.

## Industrial Metaverse

**4.0:** A newer concept, not typically included.

**5.0:** Facilitates virtual factory design and immersive training environments.

## Artificial Intelligence (AI)

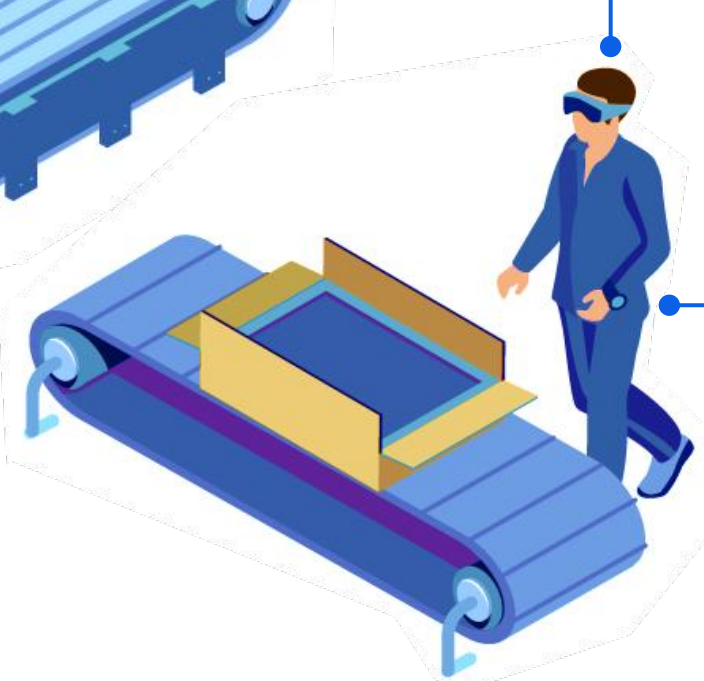
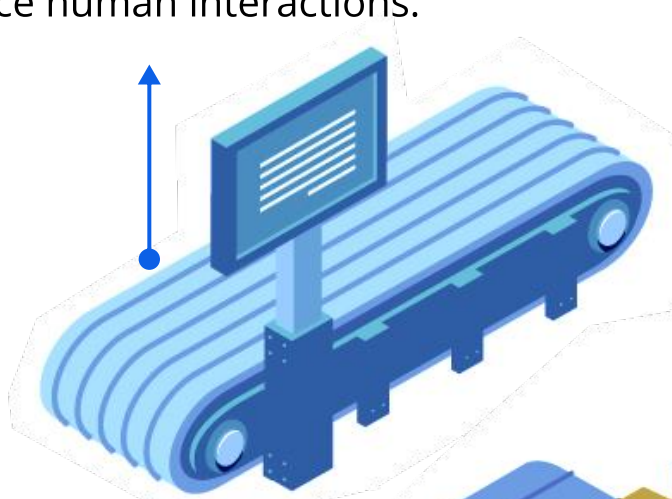
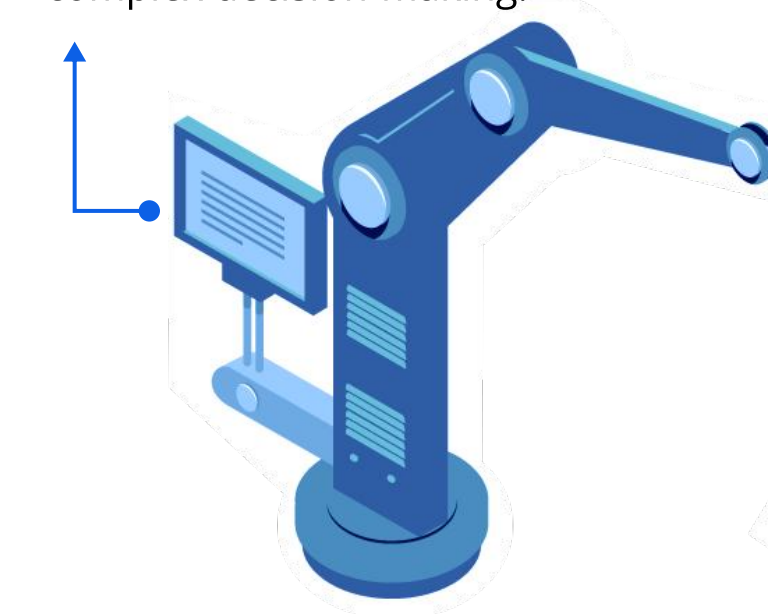
**4.0:** Powers automation, smart factories, and predictive maintenance.

**5.0:** Enhances human-robot collaboration and human-centric applications.

## Large Language Models (LLMs)

**4.0:** Improve natural language processing and human-machine interactions.

**5.0:** Enable intuitive communication and support complex decision-making.



## Augmented Reality (AR) Glasses

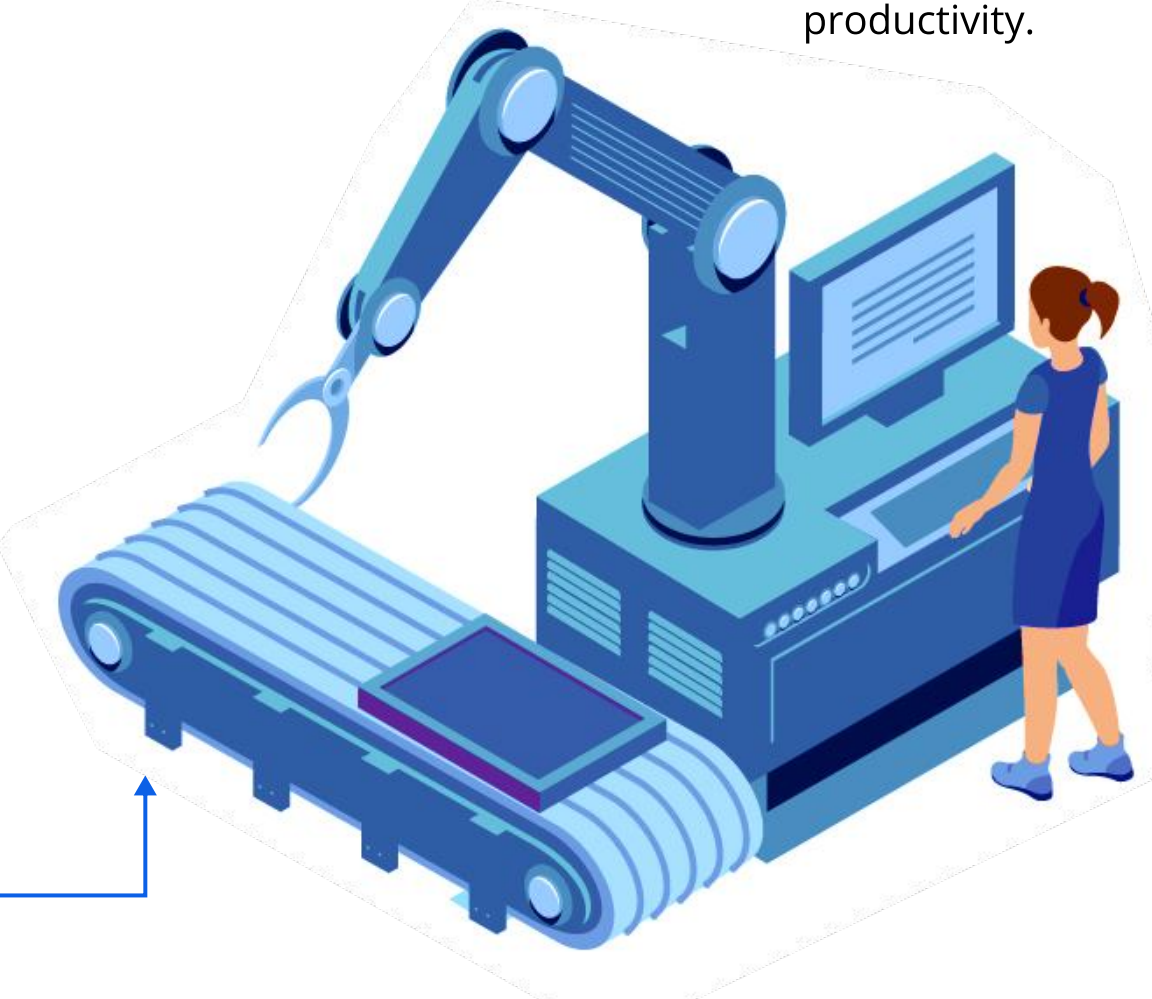
**4.0:** Enhance training, maintenance, and operational efficiency.

**5.0:** Foster real-time collaboration between humans and robots.

## Wearable Technologies

**4.0:** Monitor worker health and safety.

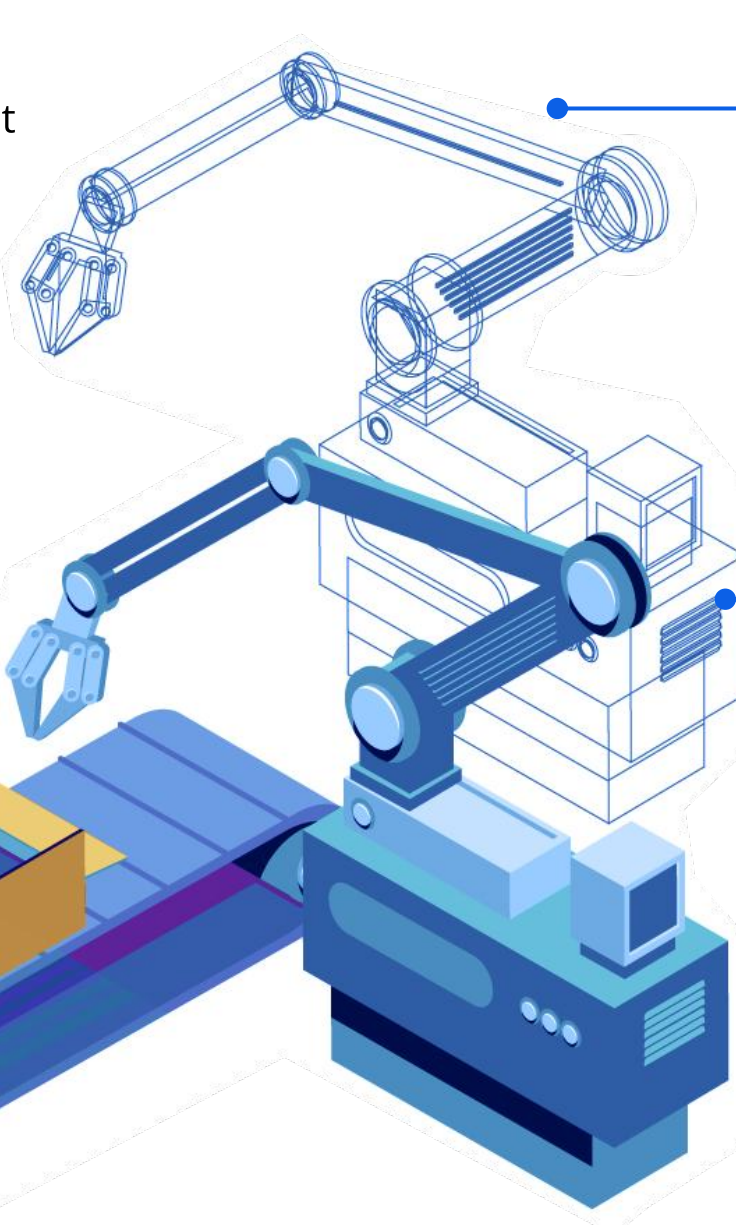
**5.0:** Provide real-time data to enhance well-being and productivity.



## Digital Twins

**4.0:** Create virtual replicas for simulation and optimization.

**5.0:** Enhance decision-making with detailed interactive simulations.



## Internet of Things (IoT)

**4.0:** Enables real-time monitoring and process control.

**5.0:** Creates interconnected, responsive systems in harmony with human operators.

## ABOUT US

SoftServe is a premier IT consulting and digital services provider. We expand the horizon of new technologies to solve today's complex business challenges and achieve meaningful outcomes for our clients. Our boundless curiosity drives us to explore and reimagine the art of the possible. Clients confidently rely on SoftServe to architect and execute mature and innovative capabilities, such as digital engineering, data and analytics, cloud, and AI/ML.

Our global reputation is gained from more than 30 years of experience delivering superior digital solutions at exceptional speed by top-tier engineering talent to enterprise industries, including high tech, financial services, healthcare, life sciences, retail, energy, and manufacturing. Visit our [website](#), [blog](#), [LinkedIn](#), [Facebook](#), and [X \(Twitter\)](#) pages for more information.

[DOWNLOAD FULL REPORT](#) →

### **NORTH AMERICAN HQ**

+1 866 687 3588 (USA)  
+1 647 948 7638 (Canada)

### **EUROPEAN HQ**

+44 (0)800 302 9436

[info@softserveinc.com](mailto:info@softserveinc.com)  
[www.softserveinc.com](http://www.softserveinc.com)